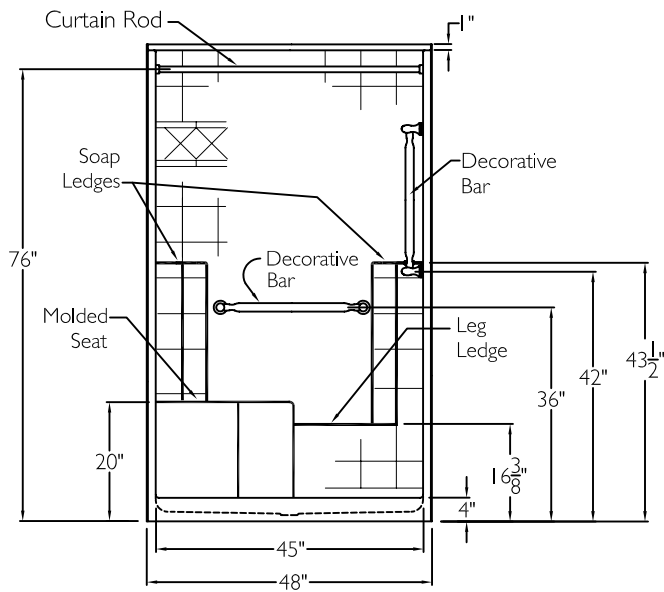
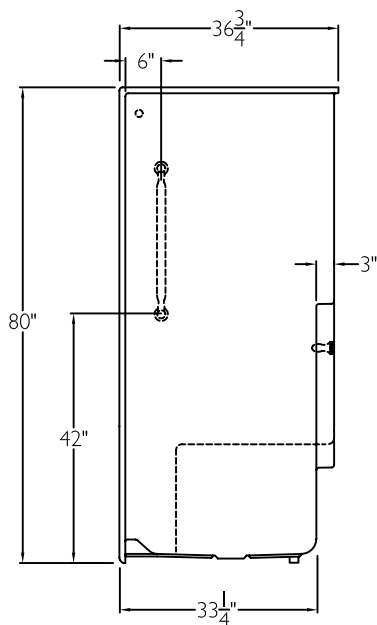


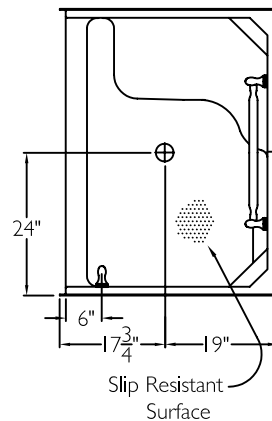
FRONT VIEW



SIDE VIEW



TOP VIEW



SUBMITTAL

This shower enclosure shall be model XST 3648 SH 1S. Finished surface shall be of a sanitary grade polyester gelcoat exhibiting a minimal thickness of 15 dry mils and a finished cured Barcoal hardness of 80-90 as tested with ASTM D-2583. Unit construction shall be of a molded reinforced fiberglass with a 15% minimum fiberglass content.

The unit shall have outside dimensions of 48" x 36 3/4" x 80".

The unit shall meet ANSI Z124.1-2, BOCA, NAHB, UPC, CSA, and shall meet the requirements of the Southern Building Code.

The enclosure shall be equipped with the following accessories:  
 1) one 24" x 1 1/4" diameter 18 gauge white decorative bar on the back wall, 2) one 24" x 1 1/4" diameter 18 gauge white decorative bar vertical on the valve wall, both with 1 1/2" statue clearance, secured from the rear with stainless steel bolts and 3" x 3" x 11 gauge metal mounting plates, 3) large molded seat, 4) tile finish, 5) diamond accents, 6) one inch diameter, 18 gauge white curtain rod with receiver cups, 7) tri cell backing, 8) 4.0" threshold.

OPTIONAL ACCESSORIES:

- Factory Plumbing Install Option:  YES  NO
- PB Pressure Balancing Mixing Valve
- Fixed shower head.
- HH Hand held shower assembly with slide bar, vacuum breaker and 60" hose.

THIS UNIT FEATURES THE OUTSIDE DIMENSION OF 48" OF OVERALL WIDTH. THIS DOES NOT ALLOW FOR FULL ENCLOSURE OF THE BOLTS AND NUTS USED TO SECURE THE BARS AND SEAT IN PLACE. THE BOLT AND NUT COMBINATION SHOULD NOT PROTRUDE MORE THAN 3/4" ON EITHER SIDE OF THE SHOWER WALLS. THIS MAY REQUIRE THE NEED TO NOTCH STUDS TO ALLOW BOLT CLEARANCE FOR A DRYWALL ENCLOSED FIRE WALL INSTALLATION. ADJUSTMENT OF THE WALL BOARD MAY BE NECESSARY TO PROVIDE CLEARANCE OF THE BOLT(S) WHILE MAINTAINING THE INTEGRITY OF THE DRYWALL ENCLOSED FIRE WALL ENCLOSURE.

NOTE: THIS UNIT WILL NOT ACCEPT A DOOR.

Job Name	Approved By	Name	Date	COMFORT DESIGNS		
Project No	Architect			Model No. XST 3648 SH 4.0 MS Active Adults-I		
Comfort Designs 435 Industrial Road Savannah, TN 38372 tel 800.443.7269 fax 731.925.4290 www.comfortdesignsbathware.com	Engineer			Drawing No. XST 3648 SH 4.0 MS DecoWHBW Deco WWSW WCR		
	Rep			Date Issued. 4-4-12	Drawing Rev.	
	Wholesaler			Material. Gelcoat		
	Comments				Color.	
				Dimensions are in inches. Due to the nature of the materials dimensions may vary ± 1/2"		